

company profile

2014



**GREG STALLINGS
CONSTRUCTION**

our family



Stallings Family

Greg Stallings Construction has been a family owned company since 1984. As an Oregon family in its fifth generation of loggers, ranchers, and farmers, the Stalling family is well equipped to serve the community that we do. 30 years later we are fortunate to look back with pride and a sense of accomplishment knowing that each year has been a success.

We are fortunate to be born into a family where faith in God, honesty, and motivation has been instilled in us since birth. For this we are eternally indebted to our foregoing generations.



Like Father, Like Son

Greg Jr. is the second generation of the Stallings Family to be leading carpentry crews. Greg has been a part time employee since the age of 16 as school would allow, and after graduating from OSU in 2010, has become the site foreman for our main construction crew.

our company



Pride Is Where It Starts

Greg Stallings Construction is committed to providing the highest level of product quality and value to our customers. Our employees take on each project with the utmost respect for the customer and with the joy of giving our neighbors a high-quality product. We are experienced in pole- and stick-frame construction for business, housing, storage, and recreational needs.

Our buildings satisfy functional and structural needs, but are also lasting, valuable, and beautiful assets to our community that our clients are proud to own for years to come.



what we do

The popularity of pole-framed construction has increased over the last 100 years because it is versatile, fast and often more economical than any stick-framed alternative. It allows for incremental construction, and expansion over time, as well as offering flexibility throughout the construction process

We pride ourselves at working out creative solutions for our clients before and during the construction phases, responding to design considerations throughout the process.



We strive to be good neighbors, and responsible stewards for the communities that we serve, taking on every project, no matter how big or small, with the same honesty and respect as we would for a family member.



what we provide

We have a diverse and versatile company which is more than capable of taking on any project. We typically staff two crews and a full service office staff to assist in the successful management of projects.



Our Framing Crew

- grading/layout
- pole/truss setting
- wood framing
- metal roofing and siding
- weatherproofing
- concrete flatwork
- finish carpentry/trim



Our Office Staff

- pre-design/schematic design
- design development
- sub-contractor bidding
- engineering and permitting
- construction management
- sub-contractor coordination



what we build

Industrial



Residential



Commercial



what we build

Agricultural



Recreational



Storage



Social



in-house design services...

...and project management



Our office staff has the full capacity to bid your project at schematic design, and carry that project through design development, construction documentation and draft all necessary shop drawings and specifications.



We use 3D modeling software that we use to create visualizations of our projects to help our clients understand what a space will be like after completion, and with or without any number of options.



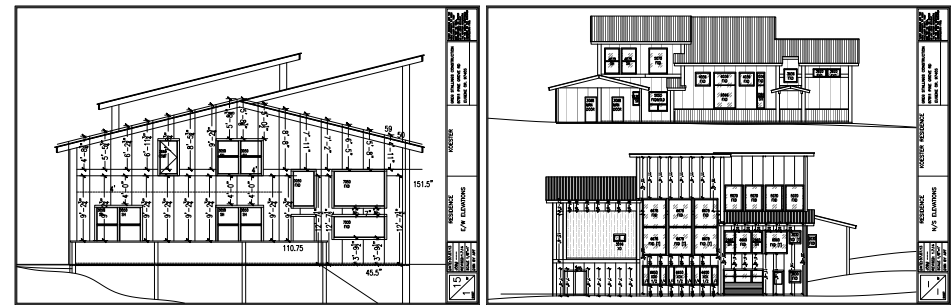
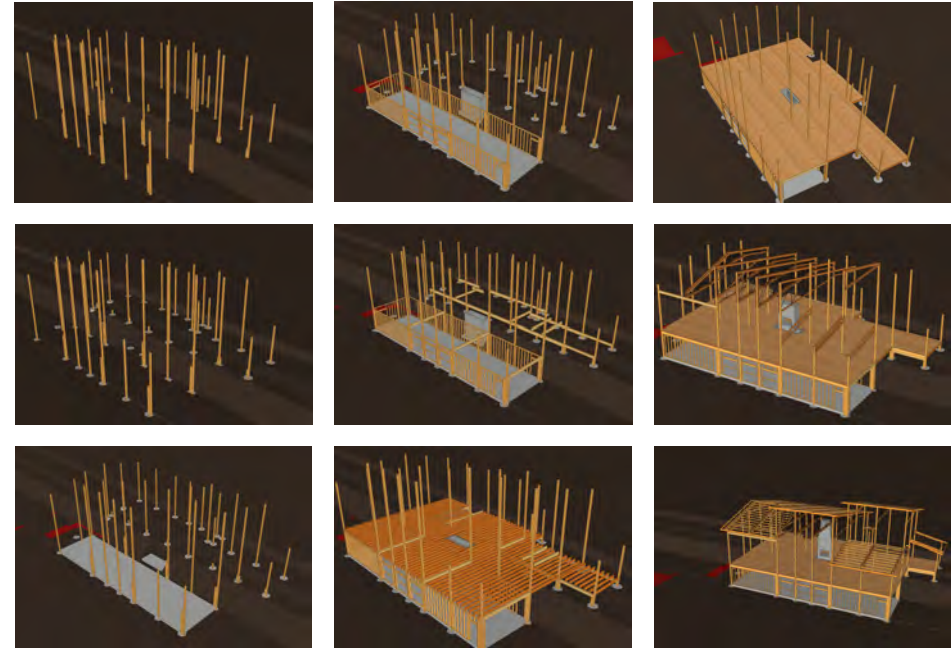
morning light



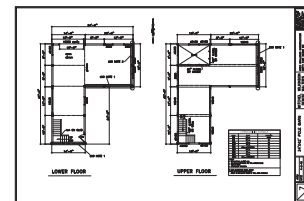
mid-day light



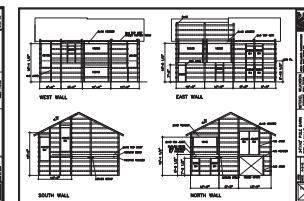
evening light



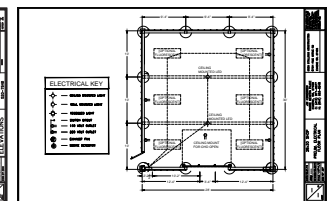
By staffing a full time design and support team, we ensure that projects are built to the greatest precision, and to the highest quality as determined through communication with our clients



construction documents



shop drawings



bid documents

premium quality



premium lumber



quality finishes



protected soffit wood



accurate structural layout



girts and stiffbacks



high quality vapor barrier on roof and walls



2-ft overhang



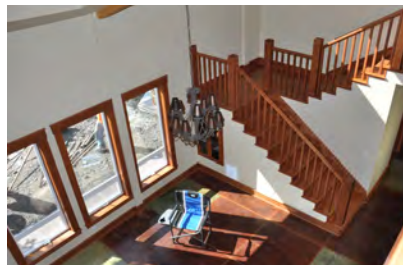
acrylic/polycarbonate siding



reinforced pier



concrete finish



concrete stain



variety of material combinations



board and bat siding



siding combinations



metal siding



wood siding options

our professional network



Material Suppliers

- lumber yards
- custom milled barn boards
- overhead doors
- weatherization
- appliances
- cabinets
- doors and windows
- sand and aggregate
- concrete
- manufactured trusses



Subcontractors

- insulation
- plumbing
- drywall
- electrical
- propane
- septic
- low-voltage (security/AV)
- composition roofing
- paint (interior and exterior)
- mechanical (radiant floor heat, ventilation, etc.)
- masonry (fireplace, wainscot, column bases, masonry walls)
- well drilling
- tile work
- landscaping



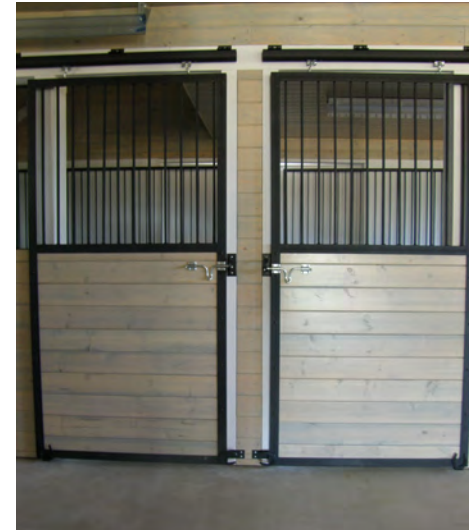
turnkey project management



Turnkey Project Management

We take pride in our ability to work with all necessary subcontractors and service providers to see that our clients need only direct their questions, concerns and desires to us, and we take care of the complete process. We have a number of strategies to take with clients to see that transparency and communication are maintained throughout every building project.

turnkey project management



custom stall layout, design, fabrication and installation



custom iron work



performance space



completed projects ready to use



any variety of finished spaces



do you want a contractor who...

...**understands your industry**, and specific needs (be it a wood shop, hay barn, home, office, etc.)?

...provides a **design team** that will work with you through iterations to maximize economy, functionality and aesthetics?

...will construct a lasting improvement to your property, **increasing the aesthetic and economic value** of your home (see “premium quality” page for details, including: 2-foot eaves, hand-selected premium lumber, vapor barriers, stiffbacks/girts, etc.)?

...has maintained long-term **relationships with subcontractors and material suppliers** to negotiate the most reasonable price for your project?

...will **take care of all engineering, permitting, land-use** and other issues associated with putting a building where you need it?

...has an open-book policy and **commitment to transparency** with customers regarding bid prices and construction costs, so that you know where your money is going?

...weathers economic downturns, and who **will be available, years down the road** for consultation, maintenance and modification long after your structure is finished?

...is proud of their company, and glad to **hire employees who are treated well**, covered by workman's comp, and proud of the work they do each day?

... has the **in-house resources** to provide everything our projects need, including: clearing and grading, concrete forming and finishing, framing, siding, roofing, custom iron, finish carpentry, and more - all by the same employees, with the same commitment to service, quality and honesty?